



**KATE DONALDSON**  
— REAL ESTATE —



#### 4 Hilda Place Whittlesea VIC

3 2 2

Superbly located, within walking distance to the wonderful Whittlesea township is this well presented and comfortable three bedroom home. Set in a quiet court location, with several living area would suit a family, downsizer or first home buyer. This lovely home is freshly painted and offers all the trimmings to move straight into!

The home presents three bedrooms, all with BIR, main bedroom with en suite and spa bath, fantastic living spaces - which include formal lounge, separate dining/ family area and spacious meals area which is overlooked by a well equipped, modern kitchen. To complete the picture, the home is set upon a picturesque garden backdrop with undercover entertaining area.

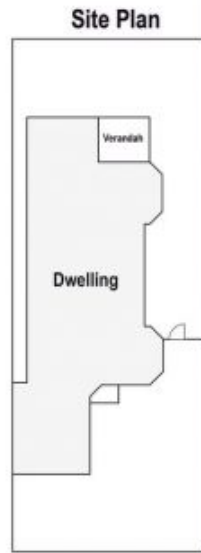
Extras include ducted heating, split system cooling, 1.5 vehicle lock up garage, secure rear yard, polished timber

**Price** : \$650,000 - \$680,000  
**Land Size** : 442 sqm  
**View** : <https://www.katedonaldsonrealestate.com.au/sale/vic/north/whittlesea/residential/house/7859860>



**Kate Donaldson**  
0417 349 719

<https://www.katedonaldsonrealestate.com.au>



The information contained herein has been obtained through sources deemed to be reliable but cannot be guaranteed as to its accuracy. Any information of special interest should be obtained through independent verification.